

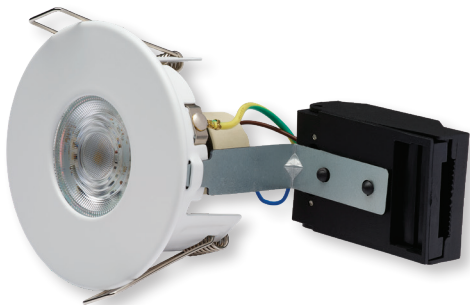
Important Information

We recommend that luminaires are installed by a qualified electrician ensuring the installation complies with current IEE wiring regulations BS7671:2018 & local building control.

- All tests should be carried out in accordance to EN 50172:2004.
- BELL will not accept responsibility for any claims arising from a poor installation.
- The light source of this luminaire is not replaceable: when the light source reaches end of life, the whole luminaire must be replaced.
- Operating Temperature 0°C to +35°C.

Safety

- Before installation/maintenance, ensure that the supply to the luminaire is switched off and the circuit breakers or fuses are removed or switched off.



British Electric Lamps Ltd

BELL House, Foxbridge Way, Normanton Industrial Estate, Normanton, West Yorkshire. WF6 1TN

T: +44 (0)1924 893380 F: +44 (0)1924 894320

E: sales@belllighting.co.uk

Technical Helpline +44 (0)1924 893380

www.belllighting.co.uk

Read these instructions before installation and retain for future reference 

This equipment should be installed by a competent electrician

